





YOUR GLOBAL LEAD & INDUSTRIAL PARTNER

KORTSA Group, thanks to its experienced staff and technical superiority, is able to process various genres of lead in many different fields. These fields comprise of Marine, Fishing, Textile, Construction, Nuclear (Radiation Shielding), Oil Platforms and Hunting.

KORTSA Group is able to process 200 tons of lead per month with the help of new-generation press, lead rope and braiding machines that function 24 hours for 7 days to meet your expectations.

KORTSA Group supplies the best quality and service with the best price possible since its sole purpose is to gain new and long-lasting solution partners.

Lead Ropes

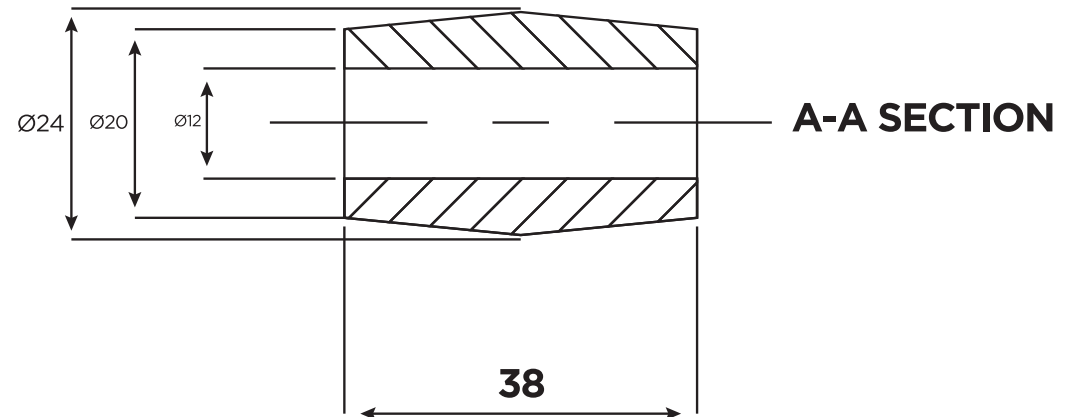
We strive to produce the best lead ropes for the bravest fishermen of the world. Mediterranean Lead Ropes is the most favourite fishing rope of Mediterranean and North Sea fishermen. Polyester cover makes the rope more flexible in use of different sea levels. (Packed in boxes or nylon bags)



| Dia (mm) | Weight (gr/mt) | Tolerance (gr/mt) | Sacs (mt) | Sacs (ft) | Strength (gr) |
|----------|----------------|-------------------|-----------|-----------|---------------|
| 5.00 | 50 | +/- 5 | 600 | 2000 | 350 |
| 5.25 | 55 | +/- 5 | 600 | 2000 | 350 |
| 5.50 | 60 | +/- 5 | 600 | 2000 | 350 |
| 6.00 | 70 | +/- 5 | 500 | 1500 | 350 |
| 6.50 | 80 | +/- 5 | 500 | 1500 | 350 |
| 7.00 | 90 | +/- 5 | 500 | 1500 | 350 |
| 8.00 | 100 | +/- 6 | 400 | 1300 | 350 |
| 9.00 | 110 | +/- 6 | 400 | 1300 | 700 |
| 10.00 | 130 | +/- 6 | 300 | 1000 | 700 |
| 10.50 | 145 | +/- 6 | 300 | 1000 | 900 |
| 11.00 | 185 | +/- 6 | 200 | 700 | 900 |
| 12.00 | 220 | +/- 7 | 100 | 350 | 900 |
| 13.00 | 250 | +/- 7 | 100 | 350 | 1000 |
| 15.00 | 300 | +/- 7 | 100 | 350 | 1000 |
| 18.00 | 400 | +/- 8 | 100 | 350 | 1800 |
| 20.00 | 500 | +/- 8 | 100 | 350 | 1800 |

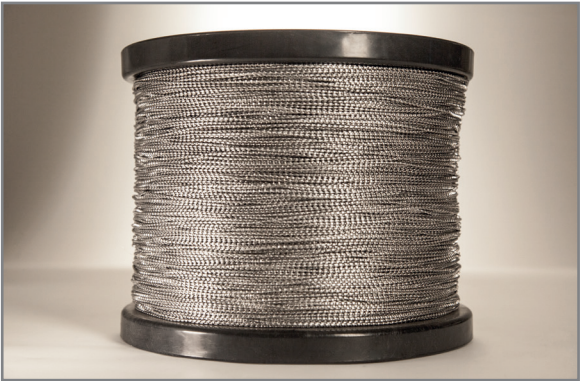
Lead Weights

Lead weights are mainly used in fishing industry to make nets sink. Having the highest gravity, lead offers fishermen opportunity to reach the maximum weight with minimum space.

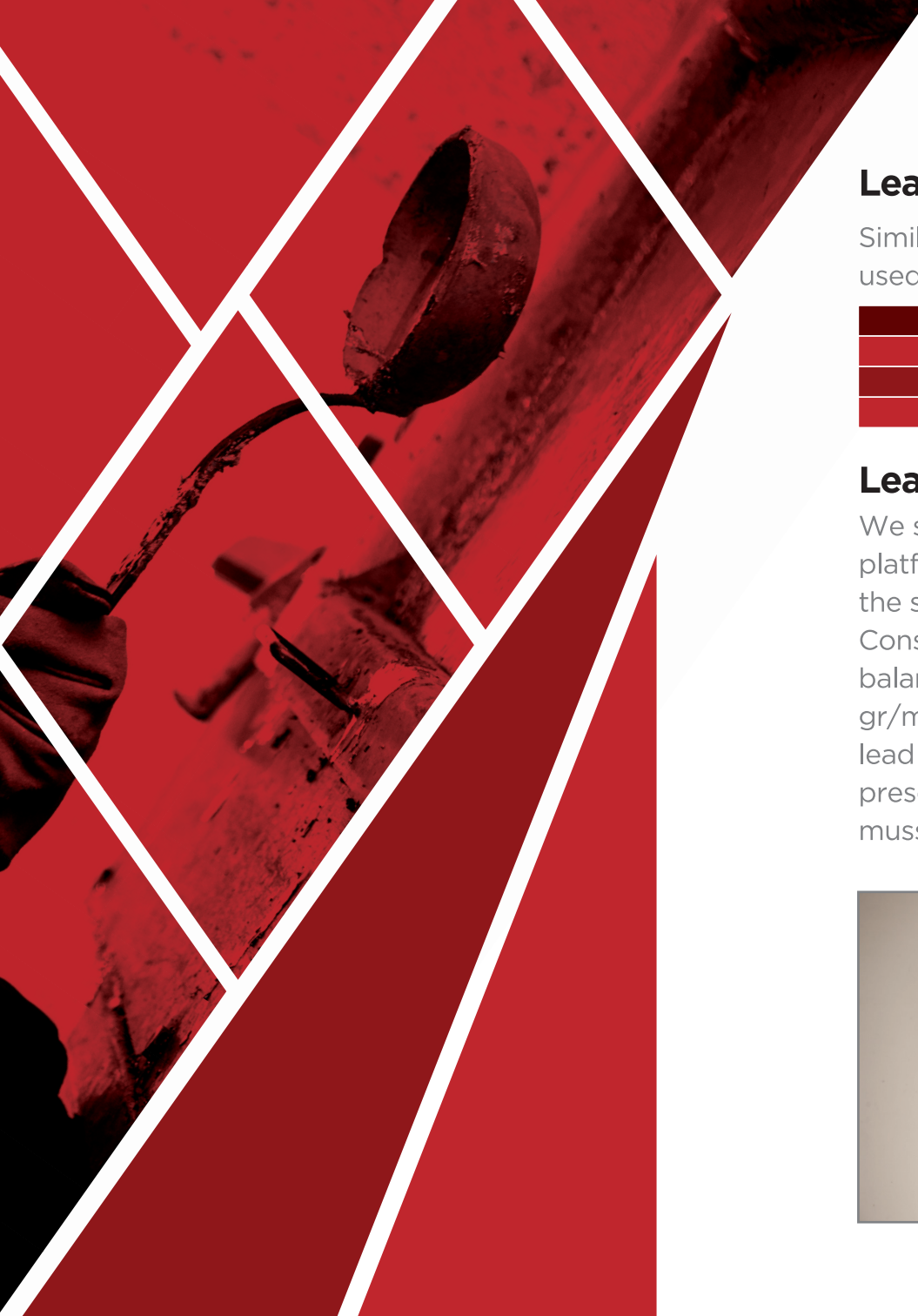


Lead Lines

Lead lines are also used in fishing industry to make nets sink. As having the highest gravity, lead offers fishermen opportunity to reach the maximum weight with minimum space. Lead line is a semi-product for the use of fishing rope manufacturers.



| Dia (mm) | Weight (gr/mt) | Dia (mm) | Weight (gr/mt) | Dia (mm) | Weight (gr/mt) | Dia (mm) | Weight (gr/mt) |
|----------|----------------|----------|----------------|----------|----------------|----------|----------------|
| 1.30 | 10 | 3.10 | 60 | 5.40 | 175 | 7.20 | 290 |
| 1.30 | 11 | 3.20 | 65 | 5.50 | 180 | 7.30 | 295 |
| 1.40 | 12 | 3.30 | 70 | 5.60 | 185 | 7.30 | 300 |
| 1.40 | 13 | 3.40 | 75 | 5.70 | 190 | 7.30 | 305 |
| 1.50 | 14 | 3.50 | 80 | 5.80 | 195 | 7.40 | 310 |
| 1.50 | 15 | 3.60 | 85 | 5.90 | 200 | 7.40 | 315 |
| 1.60 | 16 | 3.70 | 90 | 6.00 | 205 | 7.40 | 320 |
| 1.60 | 17 | 3.80 | 95 | 6.10 | 210 | 7.50 | 325 |
| 1.75 | 18 | 3.90 | 100 | 6.20 | 215 | 7.50 | 330 |
| 1.75 | 19 | 4.00 | 105 | 6.30 | 220 | 7.50 | 335 |
| 1.90 | 20 | 4.10 | 110 | 6.40 | 225 | 7.60 | 340 |
| 1.90 | 22 | 4.20 | 115 | 6.50 | 230 | 7.60 | 345 |
| 2.00 | 25 | 4.30 | 120 | 6.60 | 235 | 7.60 | 350 |
| 2.10 | 28 | 4.40 | 125 | 6.70 | 240 | 7.70 | 355 |
| 2.20 | 30 | 4.50 | 130 | 6.80 | 245 | 7.70 | 360 |
| 2.30 | 32 | 4.60 | 135 | 6.90 | 250 | 7.70 | 365 |
| 2.40 | 35 | 4.70 | 140 | 7.00 | 255 | 7.80 | 370 |
| 2.50 | 38 | 4.80 | 145 | 7.00 | 260 | 7.80 | 375 |
| 2.60 | 40 | 4.90 | 150 | 7.00 | 265 | 7.80 | 380 |
| 2.70 | 42 | 5.00 | 155 | 7.10 | 270 | 7.90 | 385 |
| 2.80 | 45 | 5.10 | 160 | 7.10 | 275 | 7.90 | 390 |
| 2.90 | 50 | 5.20 | 165 | 7.10 | 280 | 7.90 | 395 |
| 3.00 | 55 | 5.30 | 170 | 7.20 | 285 | 8.00 | 400 |



Lead Bars

Similarly to Lead Bands, Lead Bars (or as known as Lead Sticks) are also used as a balancing and weighting material at the bottom of the curtains.

| LEAD STICK | | | |
|------------|---------------------|--------|--------|
| 13 | 14g rods-white lack | vacuum | 50 pcs |
| 25 | 25g rods-whitelack | vacuum | 25 pcs |
| 50 | 50g rods-white lack | vacuum | 25 pcs |

Lead Wires & Lead Keels

We supply Lead wires with lowest tolerance rate possible for huge oil platforms in huge oceans and Lead Keels for the most elegant sailboats in the sea. Lead wires are used in two distinct industry; Oil Platform Construction and Fishing. Big size lead wire on wooden reels is used to balance oil platforms in the sea and sizes vary from 10 gr/mt up to 2000 gr/mt. Small size lead wires are used in fishing into the ropes. PVC coated lead wire is also used in fishing and it is an environmental friendly product preserving the sea from toxicity of lead; they are specially designed for mussel farming.



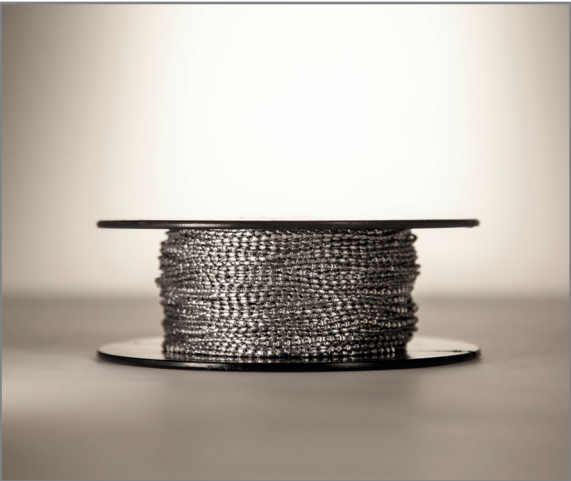
Did you know ?

The word "keel" has the distinction of being regarded by some scholars as the very first word in the English language recorded in writing (referring to the three ships that the Saxons first arrived in UK Territory).



Lead Bands

Home Textile is one of the lead industries and that’s why we manufacture Lead bands that are used as weighting material at the bottom of the curtains. By means of our special exterior box design, industrial consumers are able to find the most appropriate output rapidly and convenience to the automatic systems in serial industrial productions.



BOX TYPE

| Size (gr/mt) | Article Description | Packing | Meter |
|--------------|---------------------|---------|-------|
| 14 | 14g Leadweight | box | 1000 |
| 22 | 22g Leadweight | box | 1000 |
| 25 | 25g Leadweight | box | 1000 |
| 35 | 35g Leadweight | box | 500 |
| 50 | 50g Leadweight | box | 500 |
| 70 | 70g Leadweight | box | 250 |
| 85 | 85g Leadweight | box | 250 |
| 100 | 100g Leadweight | box | 200 |
| 150 | 150g Leadweight | box | 200 |
| 200 | 200g Leadweight | box | 200 |

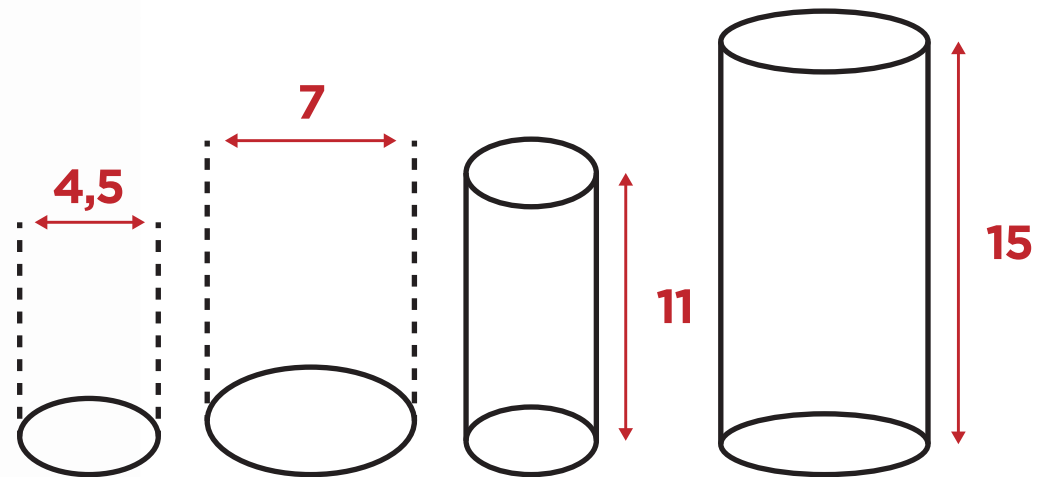
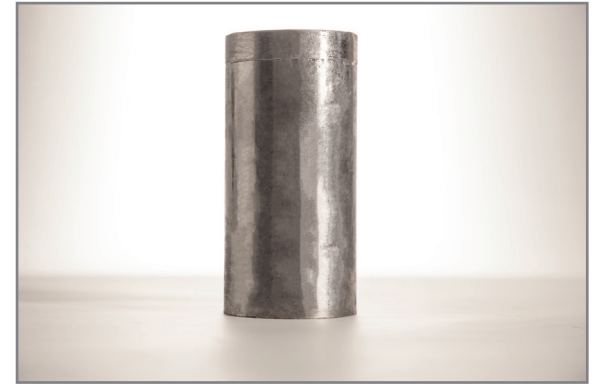
SPOOL TYPE

| Size (gr/mt) | Article Description | Packing | Meter |
|--------------|---------------------|---------|-------|
| 14 | 14g Leadweight | spool | 100 |
| 22 | 22g Leadweight | spool | 100 |
| 25 | 25g Leadweight | spool | 100 |
| 35 | 35g Leadweight | spool | 100 |
| 50 | 50g Leadweight | spool | 50 |
| 70 | 70g Leadweight | spool | 50 |
| 85 | 85g Leadweight | spool | 50 |
| 100 | 100g Leadweight | spool | 50 |
| 150 | 150g Leadweight | spool | 25 |
| 200 | 200g Leadweight | spool | 25 |



Lead Billets

Recycled Lead Billets from 2,5 kg to 3,5 kg. Lead billets are the secondary stage of lead rope manufacturing. Ingots are first converted into cylindrical billets and then put into extrusions.



Lead Shot

Lead shot is primarily used for shooting applications such as skeet, trap and game hunting. It can also be used for vibration control and sound deadening in areas where molten lead can't be used or where access doesn't permit. Lead shot is sold in 25LB woven poly bags, in denier nylon bags or in ballistic nylon bags.



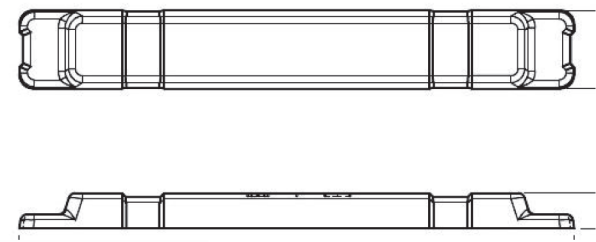
| | Dia (Inc) |
|---|---|
| Graphite-Coated CHILLED SHOT with Equivalent Hardness Factor of: 2% Antimonial Lead Alloy 25 lb Bags | .08 .09 .095 .11 .12 .13 |
| Graphite-Coated HIGH ANTIMONY MAGNUM LEAD SHOT with Equivalent Hardness Factor of: 25 lb Bags | 0.08 0.085 0.09 0.095 0.1 0.11 0.12 0.13 |
| Wax-Coated COPPER PLATED LEAD SHOT with Equivalent Hardness Factor of: 5% Antimonial Lead Alloy 10 lb Bags | .0095 0.11 0.12 0.13 |





Lead Ingots

We are able to supply you with lead ingots produced to REACH specifications for refined pure at 99.97% and pure lead at 99.94%. We can also supply secondary lead ingots that tweak the standard purity specifications to include very low sulphur at controlled levels.



CERTIFICATE

For the Quality of the Secondary
Lead Metal in Ingots

| INDICES | Lead and Impurities |
|----------------|---------------------|
| | (in percents) |
| | Date : 18.11.2013 |
| Lead, min | 99,7 |
| Silver, max | 0,035 |
| Tin, max | 0,0138 |
| Bismuth, max | 0,0104 |
| Copper, max | 0,0176 |
| Nickel | 0,0063 |
| Anthimony, max | 0,0029 |
| Zinc, max | 0,0243 |

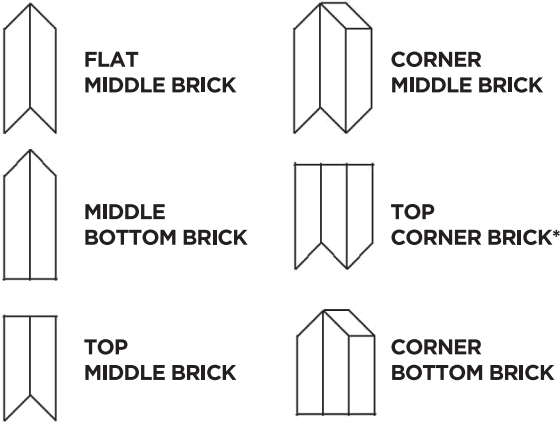
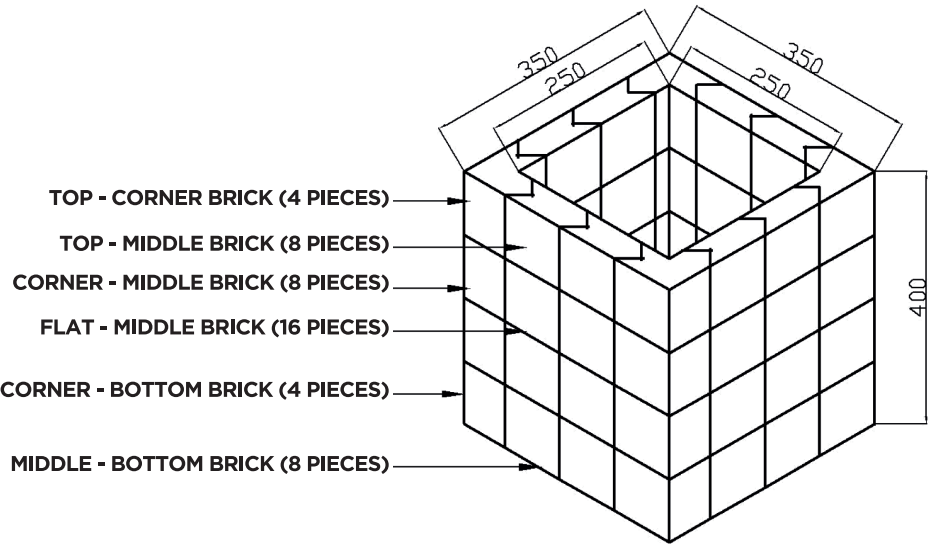
KORTSA “APOLLO 1” LEAD BRICKS AND “APOLLO 2” LEAD SHEETS FOR NUCLEAR CONSTRUCTION & RADIATION SHIELDING

“YOUR GLOBAL PARTNER IN NUCLEAR TECHNOLOGY”

KORTSA Group, in a new era of technology; with its highly qualified and experienced team; works hard to fulfil your expectations as a global partner. Every day, we invest more and more on research and development to meet your needs; with “Apollo” Lead Sheets and Lead Bricks, you’re always one step ahead of your rivals.

KORTSA works hard and with passion to facilitate your lives. That’s why we mould perfect lead bricks to the service of engineers; straight or interlocking chevron-type in wide range of size, thickness and shape to meet your expectations.

LEAD BRICK CONFIGURATION



* IN A CONFIGURATION WHERE THERE IS NO TOP - CORNER BRICK, CORNER - MIDDLE BRICK IS USED AS ALTERNATIVE



Why KORTSA Lead Bricks?

- We value human life and we know the wrong-doings & negative sides of nuclear power; that’s why we manufacture “Apollo” in the most liable way.
- KORTSA Group is a globe-trotter and we travel non-stop to single out what’s best in the interest of your company.
- High Purity Percentage is the key to success in Lead Industry. Our pursuit for the purest lead never ends.
- Globally speaking, we follow the lead technology very closely to conceptualize your future prospects as a partner.
- KORTSA moulds perfect lead brick to the service of engineers.
- “Apollo” lead bricks offer the highest possible protection against x-ray beta and gamma radiation; cast from 99.9% pure virgin high quality lead.

| DIMENSIONS | | |
|------------|----------|-------|
| 100 mm x | 270 mm x | 60 mm |
| 100 mm x | 100 mm x | 50 mm |
| 200 mm x | 200 mm x | 30 mm |
| 200 mm x | 200 mm x | 27 mm |
| 150 mm x | 300 mm x | 25 mm |
| 200 mm x | 200 mm x | 24 mm |
| 200 mm x | 200 mm x | 22 mm |
| 200 mm x | 200 mm x | 12 mm |
| 200 mm x | 200 mm x | 10 mm |

KORTSA “Apollo 1” Lead Bricks

- Available as straight or interlocking chevron-type in a wide range of sizes, thicknesses and shapes to suit your application.
- Maximum Protection in Radiation Shielding (X-Ray Beta / Gamma Rays)
- KORTSA straight lead bricks can be cut on site in any direction without the fear of losing the interlocking capability.

KORTSA “Apollo 2” Lead Sheets

- Lead Sheet is highly resistant to corrosion so it is a desirable product in tank linings for corrosive acids, strong industrial chemicals and corrosion resistant sealing gaskets.
- It is equally practical in salt water applications and is influential in roofing applications where it resists the effects of acid rain.
- Its high limpness value and its consistent density make “Apollo” lead sheet necessary in both soundproofing and isolating vibration.
- “Apollo” Lead Sheet is waterproof and is often used as a waterproof barrier beneath fountains, reflecting pools and even shower stall bases.

| Dimensions | Thickness | Weight |
|-------------|-----------|---------------------|
| 1000 - 2000 | 1.0 | 23 KG ± %5 |
| 1000 - 2000 | 1.5 | 35 KG ± %5 |
| 1000 - 2000 | 2.0 | 46 KG ± %5 |
| 1000 - 2000 | 2.5 | 57 KG ± %5 |
| 1000 -2000 | 3.0 | 69 KG ± %5 |
| 1000 - 1000 | 4.0 | 46 KG ± %5 |
| 1000 - 1000 | 5.0 | 57 KG ± %5 |
| 1000 - 1000 | 6.0 | 69 KG ± %5 |
| in mm | | Lead Purity : 99.94 |





We know that Earth's resources are limited and it is important that we conserve and recycle as much as possible. That's why we provide of our need of %100 6000 tons of lead from recycled material, because it takes less energy to melt and remould metals than it does to extract new metals from their ores.

**REUSE
REDUCE
RECYCLE**



MEMBERSHIP & CERTIFICATION



ILA Associate Member



LEAD Recycle Program



EUROCORD Member



REACH Compliance



ATR / EUR1 Certificate



ISO 9001 : 2008



TUV Cert

